



# 2020 IMAGING

POWERED BY  
**2020tuchcontrol**

"We are drowning in information, while starving for wisdom. The world henceforth will be run by synthesizers, people able to put together the right information at the right time, think critically about it, and make important choices wisely."

E. O. Wilson

We are moving to a world where a systems networking logic becomes applicable in every realm of daily activity, in every location and every context.

Manuel Castells envisages a system where billions of miniature, ubiquitous inter-communication devices will be spread worldwide, "like pigment in the wall paint".

2020Tuch Control was designed from the ground up to create a user interface and operation platform to deal with the huge explosion of data that will be generated by such systems. The capacity to integrate CCTV, building automation and security systems across numerous locations. It connects multiple systems into a single, intuitive interface that automates notifications and interactions between systems. Redefining the future in complex data management in the area of command and control.

The future cannot be predicted, but futures can be invented.

2020 Imaging Ltd is a young, innovation lead company based in East Sussex. Since 2001 we have worked with academic and commercial partners to develop video analytics applications and hardware modules, our innovative and revolutionary 2020TuchControl command and control system and our class leading network video recorder.



For more information please visit our website [www.2020imaging.com](http://www.2020imaging.com) or contact us directly:

Nigel Barrington  
T: +44 (0) 1580 201 715  
E: [nigel.barrington@2020imaging.com](mailto:nigel.barrington@2020imaging.com)

David Hollick  
T: +44 (0) 1580 201 715  
E: [david.hollick@2020imaging.com](mailto:david.hollick@2020imaging.com)

2020 Imaging Ltd, 3 Parsonage Business Park, Church Street, Wadhurst, E Sussex, TN5 7DL

2020's TuchControl suite of easily installable rack mounted modules now gives the integrator the ability to plan, build and easily configure complex distributed, networked PSIM systems from medium to very large scale and to rapidly deploy control rooms for them using our unified, intuitive, multitouch user interface

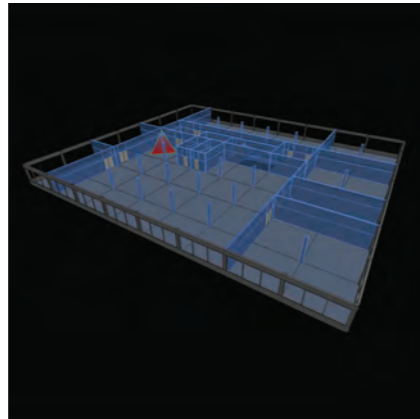
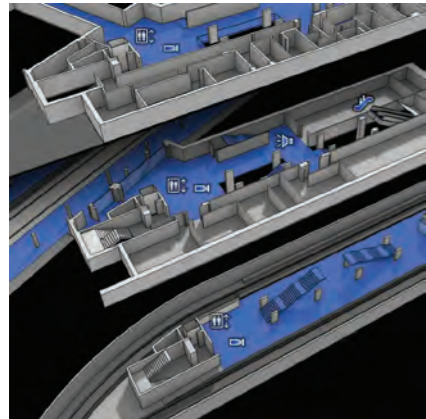
- Increased operational efficiency
- Accurate, real-time data analysis
- Advanced video analytics
- Unique multi-touch / multi-user interface
- Centralised monitoring of all assets with revolutionary alarm management capability
- Flexible data sharing, workflow management & incident reporting

## Applications

### Infrastructure and Facility Management

Our integrated 2020TuchControl command and control system provides infrastructure and facility management along with a complete array of services that supervise and control mission critical systems via a real-time central unified operations facility.

This provides a safe and secure operation that can be accessed efficiently through a multi-user interface. Totally integrated CCTV, video analytics, access control, biometric sensors, fire and smoke alarms, lighting and HVAC control and many more.



#### Key Benefits:

- Ease and simplicity of use
- Enhanced operations providing an effective and quicker response to multi-crisis situations
- More effective decision support
- Reduced costs
- Compatibility with new and existing assets



### 2020 System Modules

Our system is delivered as turn-key, embedded 4U rackmount intelligent modules:

#### ICM1 IntelliControl GUI Module

The flagship among the family of modules, acts as the control centre for the rest of the system

#### ICM4 IntelliAnalytics Module

Dedicated to one task: providing high-grade video analysis of CCTV video

#### ICM2 IntelliConnect Control & Interface Module

The core systems interfacing component of the TuchControl system

#### ICM5 IntelliWall Video Wall Driver Module

Making simple the building of monitor wall control room configurations

#### ICM3 IntelliStore NVR Module

Designed for live-rate video recording from a wide range of IP CCTV camera types

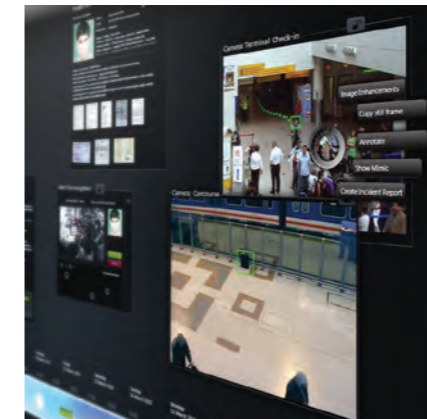
#### ICM6 IntelliFile Fileserver Module

Providing secure fileserver and SQL database functions to all the member modules of the family

## Technology

### Control Room

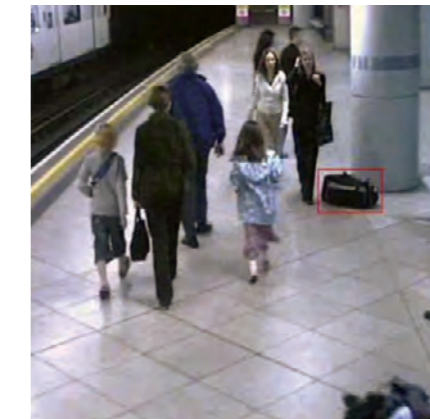
It is the first system of its kind that provides access to all audio and visual information, communication, security and asset monitoring systems via a single user interface.



- Compatible with all relevant interface standards
- Flexibility to integrate into existing networks and infrastructure
- Enhanced technology to increase productivity, quality of supervision, control and plant-wide collaboration
- Improved operation through intuitive indications and alerts
- Fully realised communications between assets, facilities and staff

### Video Analytics

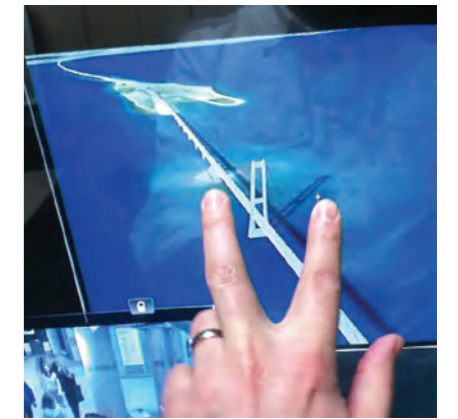
As CCTV has become a major player in infrastructure management, making sense of the volume of video and collective data can be a major challenge. Our Video analysis solutions significantly increase the value of CCTV systems.



- Intelligent image analysis software scans through vast amounts of video and associated data in real time
- Applications for: suspicious behaviour, facial recognition, ANPR, people counting, multi camera people tracking, abandoned objects, sterile zone monitoring and much more
- Full integration with command and control system
- Triggers alarms automatically
- Eases operator decisions & actions

### Multitouch Screen

Our multi-touch user interface revolutionises the way an operator controls his assets. Camera views, 3D satellite and aerial map views, background data, such as suspect identification, are accessed by multi-touch gestures on screen.



- Unique timeline operated visualisation of stored video data is used to manage real time events
- On screen operator checklists can be easily manipulated ensuring correct response to incidents
- Custom designed interface to suit the client needs
- Real-time cross-functional vision capability with minimum of training
- Ergonomic & intuitive

